



NORTH BAY WATER REUSE PROGRAM

Water Supply Reliability through Regional Reuse



North Bay Water Reuse Authority

Sonoma County Water Agency | Novato Sanitary District | Napa Sanitation District

Sonoma Valley County Sanitation District | City of Petaluma

Marin Municipal Water District | City of American Canyon

Notice of Preparation of an Environmental Impact Report/Environmental Impact Statement NBWRA North Bay Water Reuse Program – Phase 2

Introduction

The North Bay Water Reuse Authority (NBWRA) is proposing Phase 2 of the North Bay Water Reuse Program (Phase 2 Program). As contract administrator for the NBWRA, the Sonoma County Water Agency (Water Agency) will act as Lead Agency under the California Environmental Quality Act (CEQA) for preparing a joint Environmental Impact Report (EIR)/Environmental Impact Statement (EIS). The Department of Interior, Bureau of Reclamation, will be the federal Lead Agency under the National Environmental Policy Act (NEPA) for preparing an Environmental Impact Statement (EIS).

This Notice of Preparation (NOP) for the Phase 2 Program describes the proposed project, as defined under CEQA, that will be reviewed in the EIR/EIS and identifies the issue areas that will be studied in the environmental review. Agencies and interested members of the public are invited to provide input on the scope of the environmental analysis to be evaluated.

Project Background

Recognizing the continuing need for an integrated and regional approach to water management, wastewater and potable water agencies in the North San Pablo Bay region of California have joined together to propose expansion of existing recycled water use and integrated water management in the region. NBWRA comprises 11 wastewater and potable water utilities as member agencies – the Las Gallinas Valley Sanitary District (LGVSD), the Novato Sanitary District (Novato SD), the Sonoma Valley County Sanitation District (SVCSD), the Napa Sanitation District (Napa SD), the North Marin Water District (NMWD), Napa County, Marin County (associate membership), the Marin Municipal Water District (MMWD), the City of American Canyon, the City of Petaluma, and the Water Agency. The Water Agency is also acting as the administrative agency. NBWRA explores opportunities to coordinate “interagency efforts to expand the beneficial use of recycled water in the North Bay Region thereby promoting the conservation of limited surface water and groundwater resources.”

**North Bay Water Reuse Authority • c/o Sonoma County Water Agency • 404 Aviation Boulevard, Santa Rosa, CA
95403 707-235-8965 • NBWRA.org**

County of Marin • Las Gallinas Valley Sanitary District • Novato Sanitary District • Marin Municipal Water District • North Marin Water District • Sonoma County Water Agency
City of Petaluma • Sonoma Valley County Sanitation District • County of Napa • Napa Sanitation District • City of American Canyon

In 2009, the Water Agency certified the Phase 1 EIR, allowing member agencies to use the document to meet their obligations under CEQA for project implementation under Phase 1 and established the Program as a functioning regional recycled water system. In 2011, the Bureau of Reclamation issued its Record of Decision completing the review of the Phase 1 Program under NEPA.

The proposed Phase 2 Program seeks to continue increasing the beneficial use of recycled water for the environment, agriculture, and urban irrigation and decreasing the amount of water discharged into San Pablo Bay and its tributaries. The proposed Phase 2 Program also continues to build on commitments to long-term inter-agency cooperation and integrated water management to address common needs related to reliable water supplies and enhanced environmental restoration. As implementation of Phase 2 would require external funding assistance, the investigation and development of these Projects are being carried out in conformance with the requirements of the Public Law 102-575, Title XVI, which provides a mechanism for federal participation and cost-sharing in approved water reuse projects.

Project Objectives

NBWRA wishes to implement “*A cooperative program in the San Pablo Bay region that supports sustainability and environmental enhancement by expanding the use of recycled water.*” The following project objectives have been developed by NBWRA for the North Bay Water Reuse Program and are applicable to the Phase 2 Program. The Program is proposed to promote the expanded beneficial use of recycled water and integrated water management in the North Bay region to:

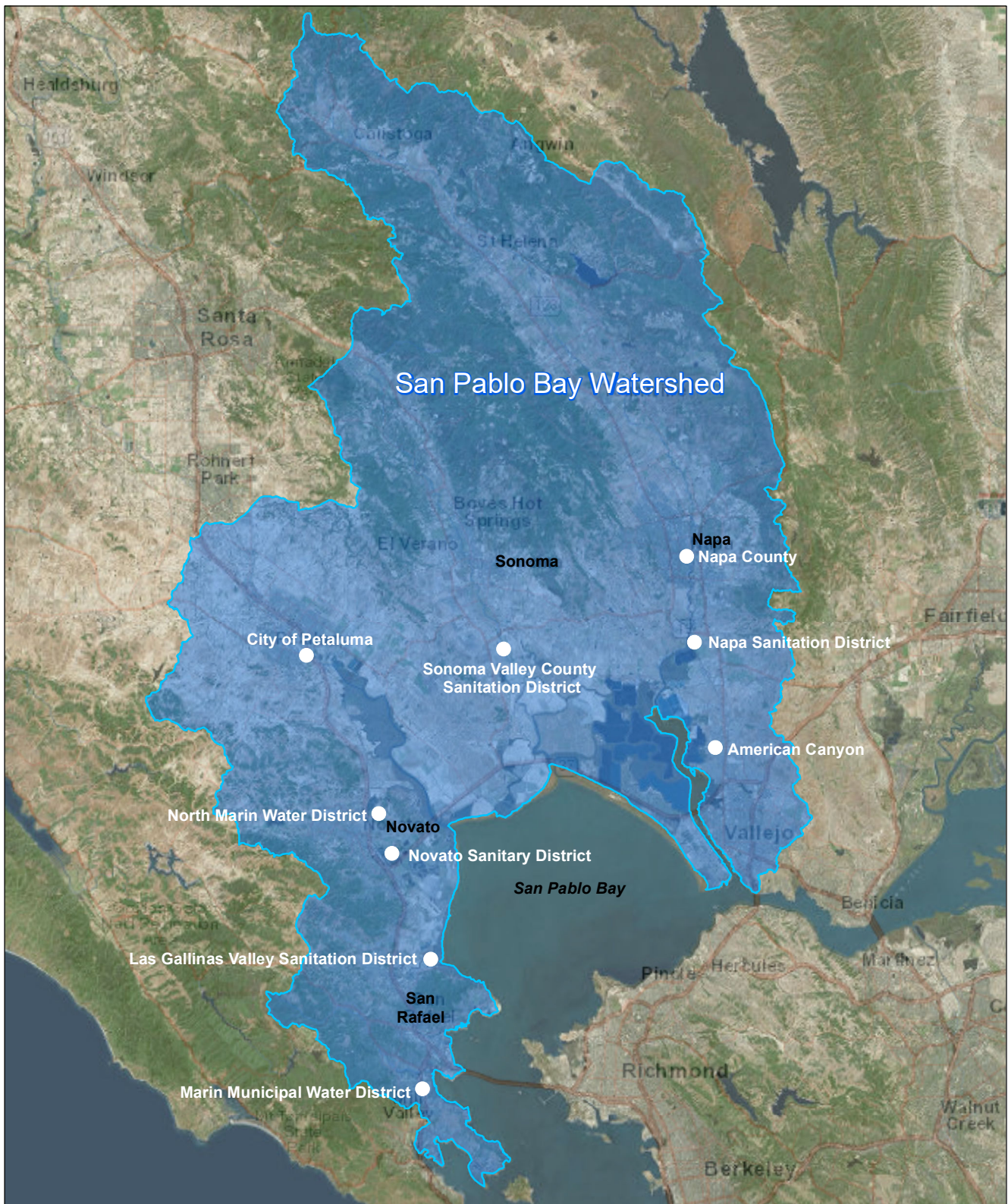
- Improve local, regional, and State water supply reliability;
- Offset demands on potable water supplies;
- Address impaired groundwater basins;
- Enhance local and regional ecosystems;
- Maintain and protect public health and safety;
- Promote sustainable practices; and
- Implement integrated water management in an economically viable manner.

Program Overview

The Phase 2 Program would be located in the North San Pablo Bay, which lies within the northern portion of the San Francisco Bay estuary in California (**Figure 1**). The project area, illustrated in **Figure 2**, extends approximately 10 to 15 miles inland from the San Pablo Bay within Marin, Sonoma, and Napa counties. The Phase 2 Program project area extends as far south as San Quentin in Marin County, as far north as El Verano in Sonoma County, and includes the cities of Napa and American Canyon in Napa County. This project area encompasses more than 300 square miles. The proposed Projects would include construction and installation of facilities, such as new distribution pipelines to deliver recycled water, pump stations to boost pressure for conveyance, and additional seasonal and operational storage facilities to store recycled water, as well as upgrades to the existing treatment capacities at the existing wastewater treatment plants (WWTPs) in the project area.

**North Bay Water Reuse Authority • c/o Sonoma County Water Agency • 404 Aviation Boulevard, Santa Rosa, CA
95403 707-235-8965 • NBWRA.org**

County of Marin • Las Gallinas Valley Sanitary District • Novato Sanitary District • Marin Municipal Water District • North Marin Water District • Sonoma County Water Agency
City of Petaluma • Sonoma Valley County Sanitation District • County of Napa • Napa Sanitation District • City of American Canyon



SOURCE: North Bay Water Reuse Authority; Calwater 2.2.1

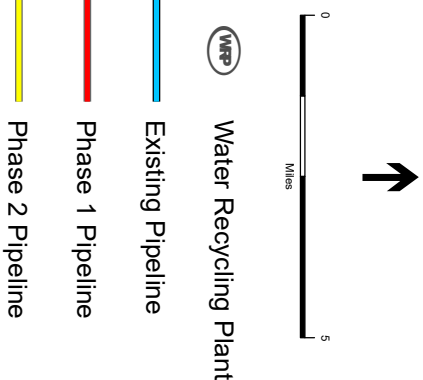
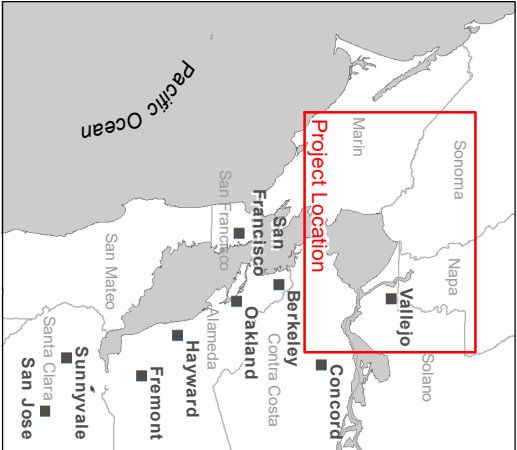
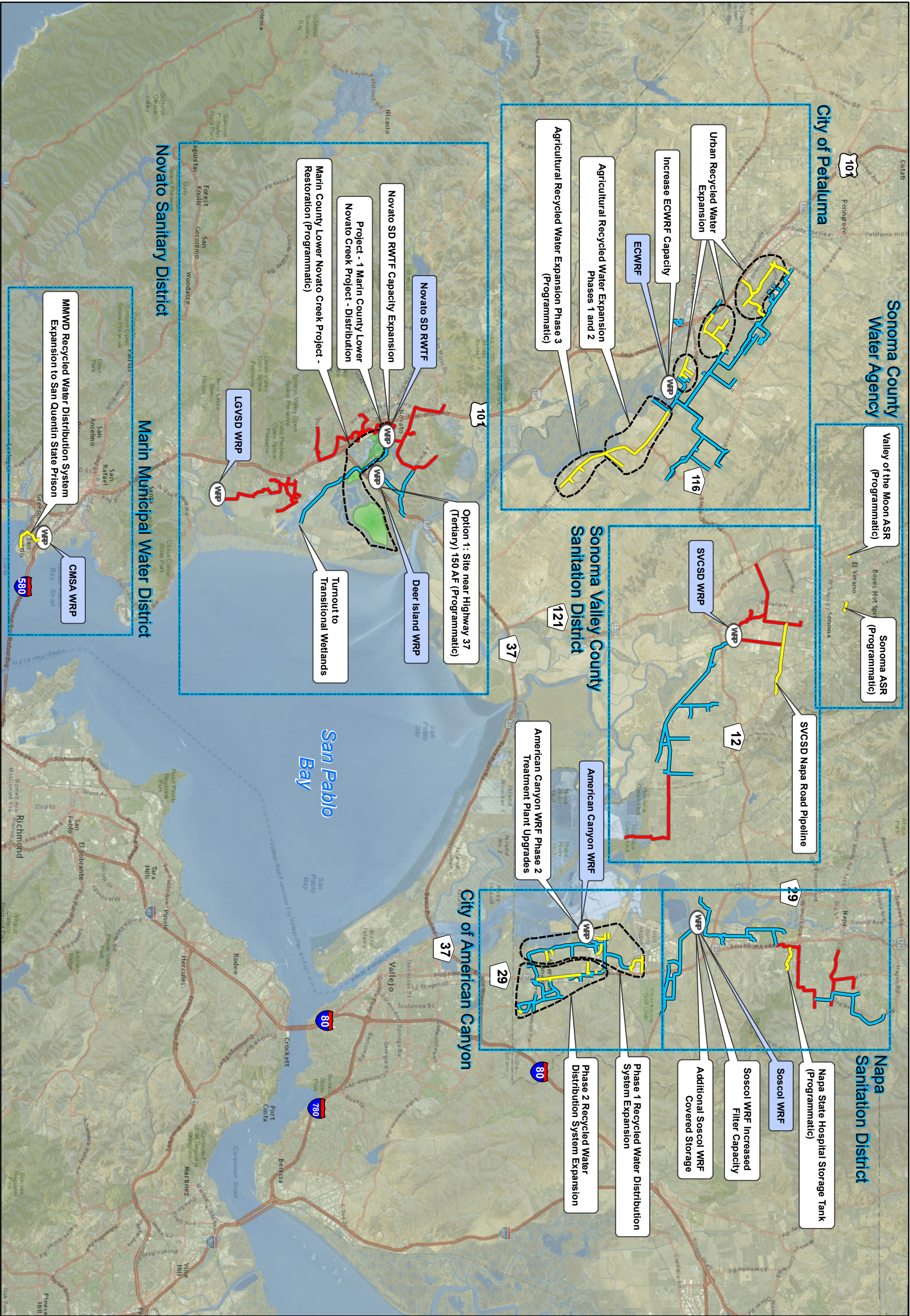
North Bay Water Reuse Program Phase 2 EIS/EIR . 206088
Notice of Preparation

Figure 1
NBWRP Study Area

This page intentionally left blank

**North Bay Water Reuse Authority • c/o Sonoma County Water Agency • 404 Aviation Boulevard, Santa Rosa, CA
95403 707-235-8965 • NBWRA.org**

County of Marin • Las Gallinas Valley Sanitary District • Novato Sanitary District • Marin Municipal Water District • North Marin Water District • Sonoma County Water Agency
City of Petaluma • Sonoma Valley County Sanitation District • County of Napa • Napa Sanitation District • City of American Canyon



This page intentionally left blank

Actions to be Considered – Phase 2 Program

As required by CEQA and NEPA, the EIR/EIS will consider the projects proposed under the Phase 2 Program, as well as a number of alternatives – including the No Action Alternative. The Phase 2 Program builds upon the North Bay Water Reuse Program’s Phase 1 infrastructure investments, which included \$104 million in treatment, distribution, and storage projects to develop recycled water as part of the region’s water supply portfolio. Building on Phase 1 technology and infrastructure investments, the Phase 2 Program would deliver increased yield through expanded treatment, new pipelines, and additional storage projects, while building resiliency into the region’s long-term water supply through the use of recycled water. In addition to these recycled water projects, Phase 2 also includes conjunctive use projects to promote integrated water management.

NBWRA’s member agencies have collectively prioritized the projects within their individual service areas to participate in the Phase 2 Program. These are projects that each member agency has defined to a level of detail that allows for project-level environmental review and will be collectively referred to as the Phase 2 Program. The Phase 2 EIR/EIS will be relied upon by the individual member agencies for approval of each project under the Program. **Table 1** summarizes these projects. Implementation of Phase 2 and a discussion of each project are provided in the following pages.

TABLE 1
IMPLEMENTATION PLAN - PHASE 2 PROGRAM PROJECTS

Agency	Projects	Project Yield (AFY)	Distribution Pipelines (miles)	Pump Stations (hp)	New Storage (AF)	WWTP Treatment Upgrades (mgd)
Novato SD	RWTF Treatment Capacity Expansion	286	--	--	--	0.85
	Marin County Lower Novato Creek Project 1 - Distribution	40	1.1	--	--	--
	Turnout to Wetlands	840	0.02	--	--	--
SVCS	SVCS Napa Road Pipeline	200	2.2	--	--	--
MMWD	Recycled Water Distribution System Expansion to San Quentin Prison	153	1.1	50	0.2	0.20
Napa SD	Increase Soscol WRF Filter Capacity	571	--	--	--	1.70
	Soscol WRF Covered Storage	240	0.1	--	10.0	--
Petaluma	Increase ECWRF Capacity	712	--	--	--	2.12
	Urban Recycled Water Expansion	223	8.0	--	--	--
	Agricultural Recycled Water Expansion – Phase 1	813	1.3	--	--	--
	Agricultural Recycled Water Expansion – Phase 2	530	2.1	--	--	--
American Canyon	Recycled Water Distribution System Expansion – Phase 1	102	2.5	--	--	--
	Recycled Water Distribution System Expansion – Phase 2	25	2.0	--	--	--
	WRF Phase 2 Treatment Plant Upgrades	168	0.2	--	--	--
Total		4,904	20.6	50	10.2	4.87

NOTES: RWTF = Recycled Water Treatment Facility
WRF = Water Reclamation Facility
ECWRF = Ellis Creek Water Reclamation Facility

SOURCE: Kennedy/Jenks, 2017

**North Bay Water Reuse Authority • c/o Sonoma County Water Agency • 404 Aviation Boulevard, Santa Rosa, CA
95403 707-235-8965 • NBWRA.org**

County of Marin • Las Gallinas Valley Sanitary District • Novato Sanitary District • Marin Municipal Water District • North Marin Water District • Sonoma County Water Agency
City of Petaluma • Sonoma Valley County Sanitation District • County of Napa • Napa Sanitation District • City of American Canyon

Collectively, the Phase 2 Program would provide 4,904 acre-feet (AF) of new recycled water for beneficial use and would include: installation of 20.6 miles of new pipelines, construction of facilities onsite at the existing WWTPs to provide an additional 1.87 million gallons per day (mgd) of tertiary treatment capacity, and development of approximately 10.2 acre-feet of storage, primarily for agricultural use. As with the Phase 1 projects, this replaces drinking water that would no longer be used for non-potable uses, thus ensuring the highest quality water is reserved for potable uses.

Novato Sanitary District

Novato Sanitary District Recycled Water Treatment Facility Capacity Expansion

This project would include facility upgrades at the existing Novato SD Recycled Water Treatment Facility (RWTF) to increase tertiary treatment and disinfection capacity by 0.85 mgd, yielding an additional 286 acre-feet per year (AFY) of recycled water. The existing 1.7 mgd Novato SD RWTF was completed in September 2012 under the Phase 1 Program and currently supplies tertiary recycled water to NMWD. This project would construct additional tertiary filters, associated pipelines and mechanical equipment, and an additional chlorine contact tank within the developed area of the District-owned facility.

Marin County Lower Novato Creek Project 1 - Distribution

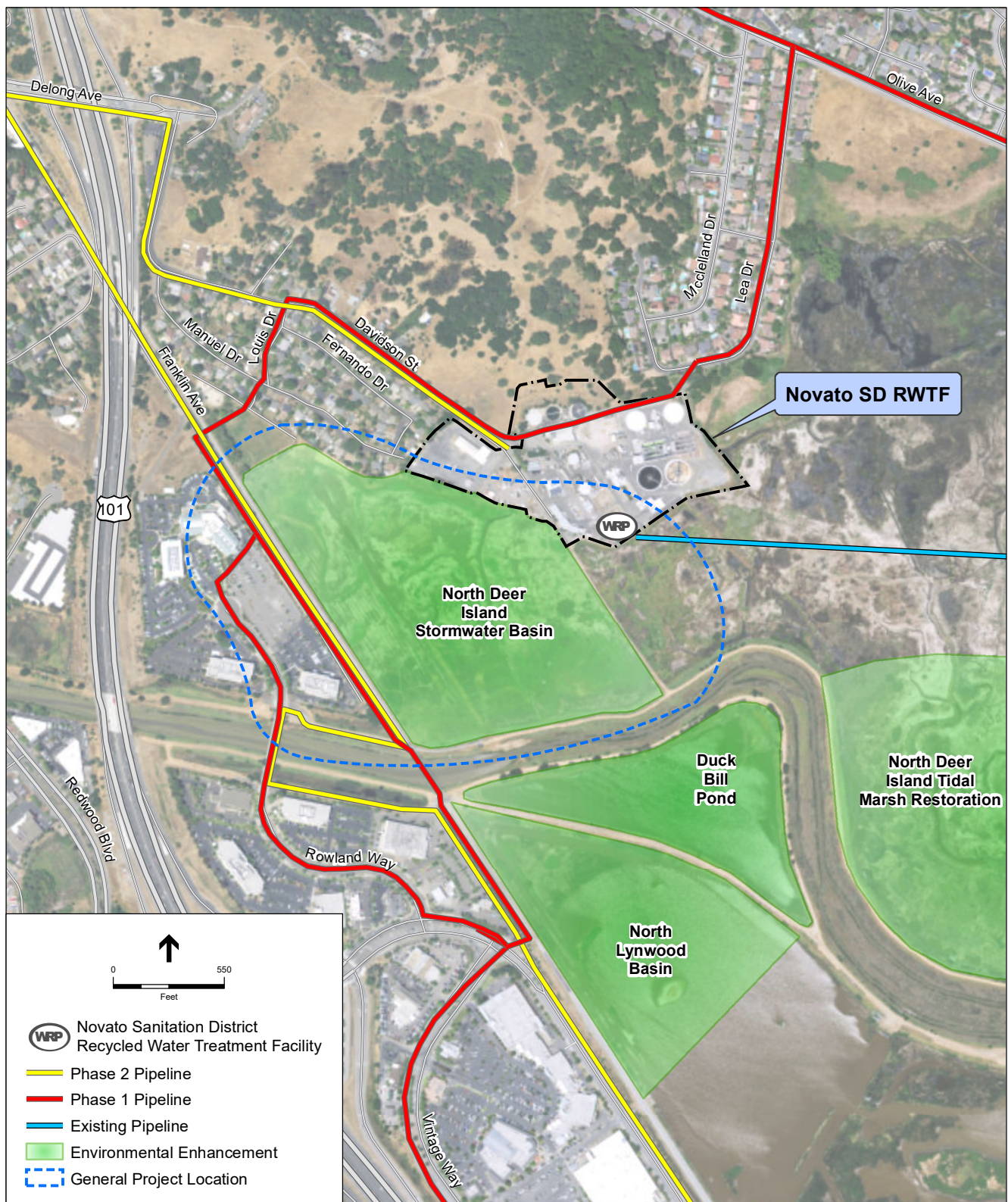
The Novato Watershed Program aims to provide a system-wide analysis of flood protection options and identify specific opportunities to integrate flood protection goals with creek and wetland restoration elements. This process includes evaluating alternatives that would reduce flood protection maintenance costs and impacts and be resilient to sea level rise. The Lower Novato Creek component of the Watershed Program potentially consists of six related projects located downstream of the Sonoma-Marin Area Rail Transit (SMART) bridge to Highway 37 (**Figure 3**). All the facilities are being designed to be adaptive to sea level rise and climate change, and contribute to habitat restoration projects. These projects support shifting use of lands from irrigated hayfields to restored tidal marsh and ecotone levees adaptive to sea level rise. The ability to implement these projects relies on the Novato SD RWTF Capacity Expansion project.

Project 1 of the Lower Novato Creek Watershed Program is the only project included in the Phase 2 Program at Project level for recycled water implementation. The remaining five projects are categorized as Programmatic Level projects and are still under consideration by Marin County. Project 1 would create habitat opportunities and create levees that could utilize recycled water from Novato SD to establish and maintain habitat. Project 1 would construct new eco-tone levees (i.e., levees planted with transitional habitat) to protect adjacent properties, including the newly upgraded treatment plant, will be adaptive to sea level rise, and will provide transitional habitat. The eco-tone levees will be able to accommodate recycled water. The Phase 2 Program project funded by Title XVI and to be analyzed in this EIR/EIS includes the conveyance facilities necessary to deliver recycled water to the levees. This includes 1.1 miles of distribution pipeline to convey recycled water from the RWTF to irrigate the eco-tone levees. The Phase 2 Program distribution project would have a recycled water yield of 40 AFY.

Turnout to Transitional Wetlands (Hamilton-Bel Marin Keys Wetland Restoration Project)

Novato SD worked with Coastal Conservancy to gain approval from the San Francisco Bay Regional Water Quality Control Board (RWQCB) to include provisions in the new National Pollutant Discharge Elimination System (NPDES) permit renewal that would allow a turnout from the existing Novato SD outfall for Coastal Conservancy to use the treated wastewater in the next phase of this restoration project. This project would include connecting to the existing outfall pipeline discharging into San Pablo Bay to divert water and discharge into future transitional brackish wetlands created by the Coastal Conservancy, under the Hamilton-Bel Marin Keys (BMK) Wetland Restoration Project. Both CEQA and NEPA review for

**North Bay Water Reuse Authority • c/o Sonoma County Water Agency • 404 Aviation Boulevard, Santa Rosa, CA
95403 707-235-8965 • NBWRA.org**



SOURCE: North Bay Water Reuse Authority

North Bay Water Reuse Program Phase 2 EIS/EIR . 206088
Notice of Preparation

Figure 3
Project 1 - Marin County Lower Novato Creek Project - Distribution

the larger BMK Wetland Restoration Project were completed in the Bel Marin Keys Unit V Expansion of the Hamilton Wetland Restoration Project Supplemental EIR/EIS and subsequent documentation. Minimal new infrastructure (i.e., a hydraulic structure with 100 feet of pipeline) would be required because the existing outfall pipeline would be utilized to convey recycled water for use to restore fresh and brackish marsh habitat along the newly-constructed shoreline. This project would provide for significant beneficial reuse of 840 AFY of recycled water that would otherwise be discharged to the San Pablo Bay. The project would allow for year-round use of wastewater for a direct environmental benefit.

Sonoma Valley County Sanitation District

SVCSO Napa Road Pipeline Project

The Napa Road Pipeline would expand the recycled water service area in the unincorporated areas of Sonoma County along Napa Road (**Figure 4**). The 2.2-mile pipeline would be located within the roadway or roadway shoulder and would connect to existing pipelines and extend eastward from 5th Street East to serve additional customers. The project would provide up to 200 AFY of recycled water to this area.

Marin Municipal Water District

Recycled Water Distribution System Expansion to San Quentin Prison

A recent Recycled Water Feasibility Study developed for the Central Marin Sanitation Agency (CMSA) and MMWD identified a preferred project to treat effluent from CMSA to California Code of Regulations (CCR) Title 22 standards and deliver it to San Quentin Prison. The project includes additional treatment of 0.2 mgd of secondary effluent at CMSA using microfiltration and chlorine disinfection, then conveying the tertiary-treated recycled water to San Quentin for dual plumbing (121.7 AFY), boiler make-up water (14.3 AFY), landscape irrigation (16.4 AFY), use in a car wash (0.1 AFY), and a truck fill station at CMSA (0.5 AFY) – a total of 153 AFY. The project also includes site retrofits for dual plumbing, connection of the partially dual-plumbed North, South, East and West blocks at San Quentin and an additional 0.2 AF of storage and pumping at CMSA. Approximately 1.1 miles of conveyance pipeline would be installed within Sir Francis Drake Boulevard from the treatment facility to the prison grounds (**Figure 5**).

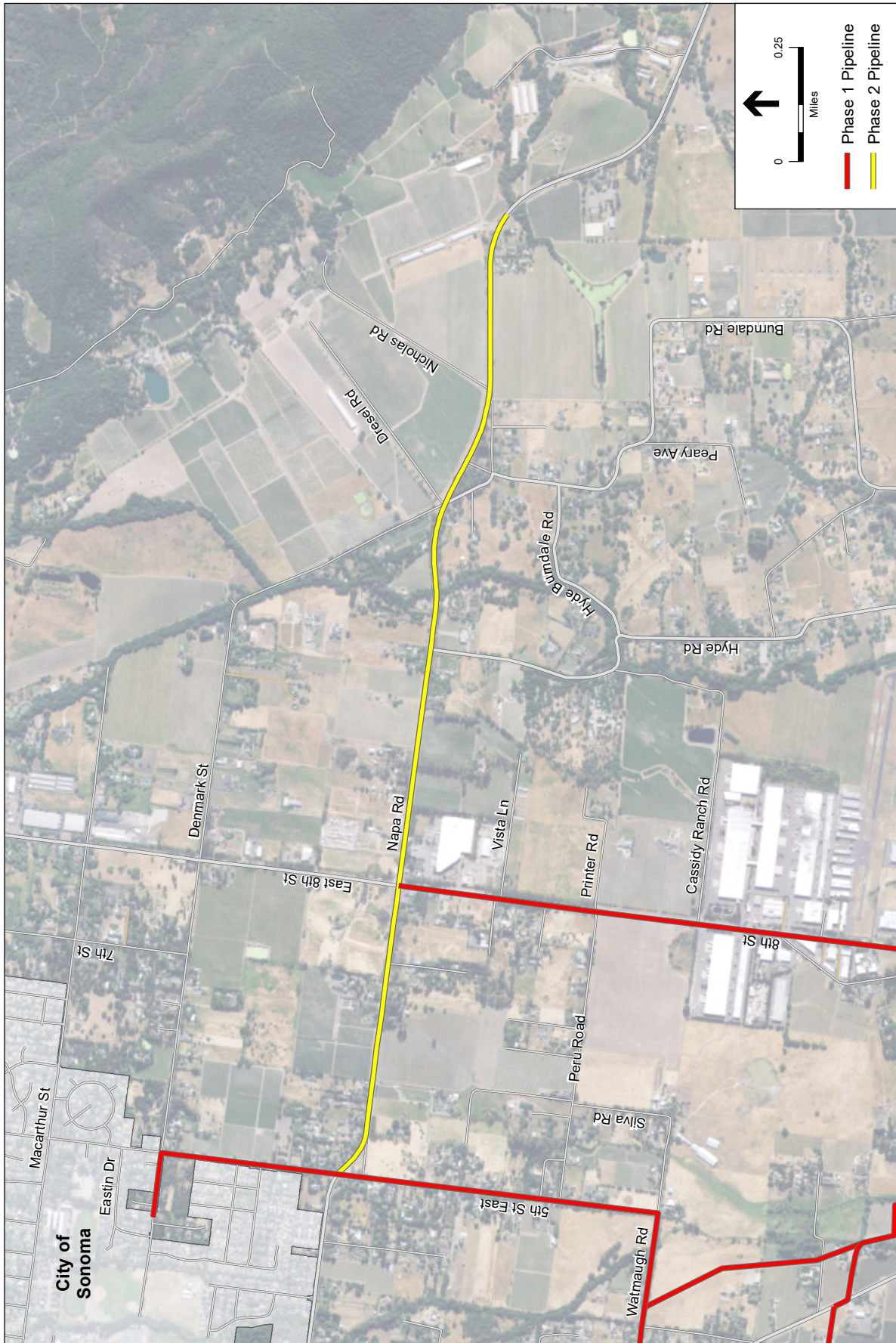
Napa Sanitation District

Soscol Water Recycling Facility Increased Filter Capacity

The Soscol Water Recycling Facility (WRF) Increased Filter Capacity project would include upgrades at the existing facility to increase tertiary treatment capacity by 1.7 mgd. Filter basins for two filters (comprised of 1,000 square feet of filter area) were constructed as part of the NBWRP Phase 1 Project, but only one filter (500 square feet of filter area) was installed at that time. This Phase 2 Program project consists of installing the remaining filter and associated mechanical components in the existing empty filter basin and would occur within the bounds of the WRF. This would yield an additional 571 AFY of recycled water.

Additional Soscol Water Recycling Facility Covered Storage

The project consists of constructing a 0.25-acre, 10 AF operational storage pond at the Soscol WRF to store tertiary filtered and disinfected recycled water that would be used to meet daily peak customer demands. Similar to the existing recycled water operational storage ponds at the WRF, the new pond would have a lined clay bottom, concrete lined side slopes, and a Hypalon cover. Approximately 600 feet of new pipeline would connect this pond to existing facilities. This project would be located within the bounds of the WRF. This would yield an additional 240 AFY of recycled water.



North Bay Water Reuse Program Phase 2 EIS/EIR . 206088
 Notice of Preparation

Figure 4
 SVCSD Napa Road Pipeline

SOURCE: North Bay Water Reuse Authority



Note: CSMA= Central Marin Sanitation Agency

SOURCE: North Bay Water Reuse Authority

North Bay Water Reuse Program Phase 2 EIS/EIR . 206088
Notice of Preparation

Figure 5
Marin Municipal Water District
Recycled Water Distribution
Expansion to San Quentin State Prison

City of Petaluma

Increase Ellis Creek Water Reclamation Facility Capacity

This project would include facility upgrades at the existing Ellis Creek Water Recycling Facility (ECWRF) to increase tertiary filtration and disinfection capacity by 2.12 mgd, providing a yield of 712 AFY. The existing ECWRF is able to treat 6.8 mgd to secondary treatment standards, but only 4.68 mgd to CCR Title 22 tertiary disinfected standards. The existing post-secondary process includes continuous backwash filters and an ultraviolet (UV) disinfection system. The existing UV system was constructed with a third channel not currently in use to allow for future expansion. This project would install five new filter cells that mirror the existing treatment system and would also install banks of UV lamps in the existing, unused channel. These improvements would allow the City of Petaluma to produce additional tertiary treated recycled water to meet increasing recycled water demands.

Urban Recycled Water Expansion

The Urban Recycled Water Expansion project would construct approximately 8.0 miles of recycled water pipelines throughout the eastern portion of the city extending from the end of the existing 20-inch-diameter pipeline that originates from the ECWRF to serve existing landscape customers currently served by the City of Petaluma's potable water system (**Figure 6**). The project would also extend a pipeline from the existing 8-inch-diameter pipeline near ECWRF to serve the Oakmead Business Park. The total project yield is about 223 AFY. The proposed pipeline alignments are along existing roadways within the city's right-of-way. The number of creek crossings would be minimized and green ways avoided to minimize construction disturbance.

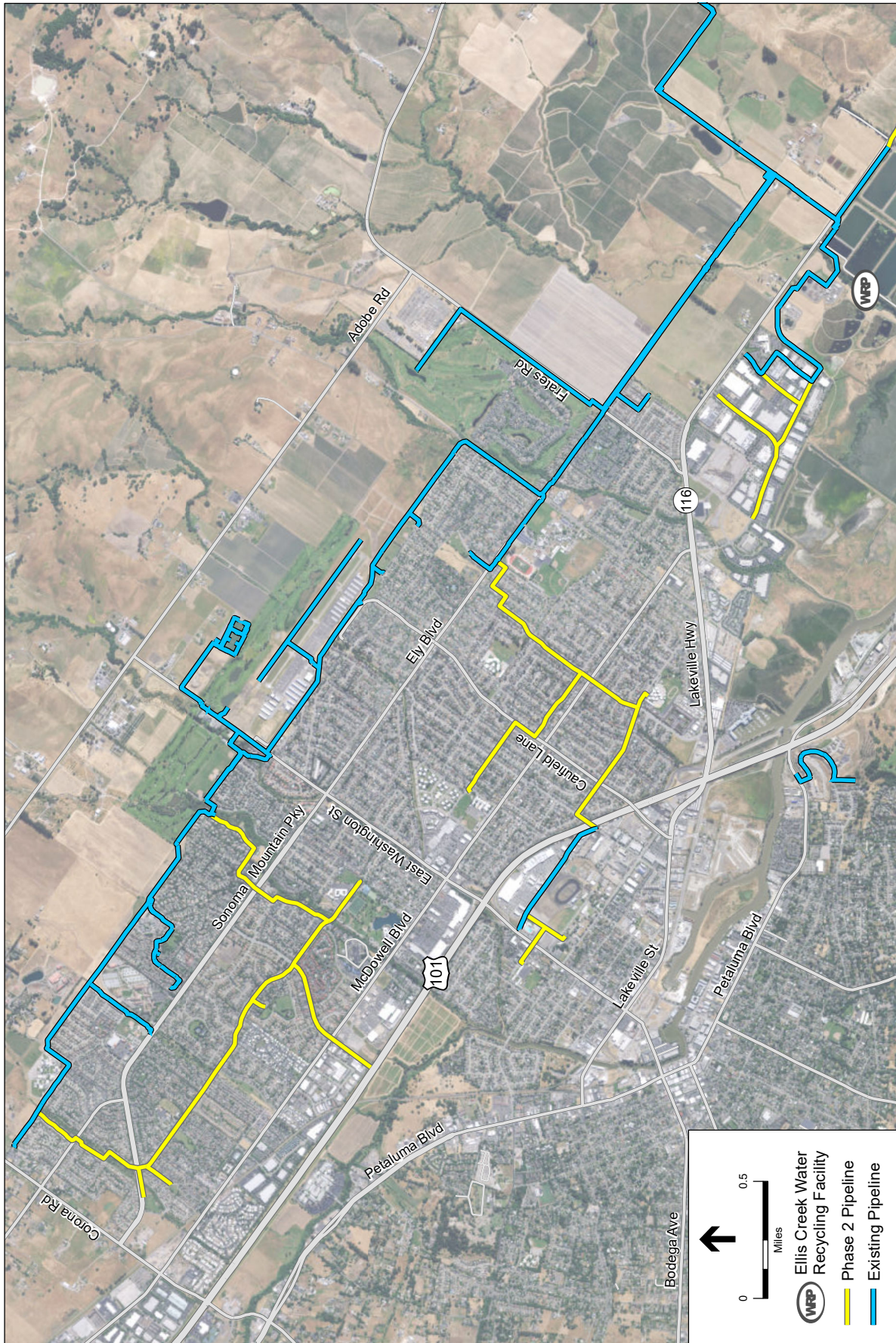
Agricultural Recycled Water Expansion

The City of Petaluma's Agricultural Recycled Water Expansion program would extend recycled water pipelines from the ECWRF eastward to serve agricultural customers along Lakeville Highway (**Figure 7**). The expansion is divided into three phases, the first two being Title XVI projects and the third a programmatic-level project (as explained below). The first phase would extend approximately 1.3 miles of pipeline from the ECWRF to Stage Gulch Road and supply 813 AFY. The second phase would extend approximately 2.1 miles of pipelines from Stage Gulch Road to Cannon Road to supply 530 AFY of recycled water. The distribution pipeline along Lakeville Highway for these phases would be sized to meet future demands for the third phase (to be reviewed at a program level). The pipelines would be located within roadways or roadway shoulders in public right-of-right. The number of creek crossings would be minimized and green ways avoided to minimize construction disturbance.

City of American Canyon

Phase 1 Recycled Water Distribution System Expansion

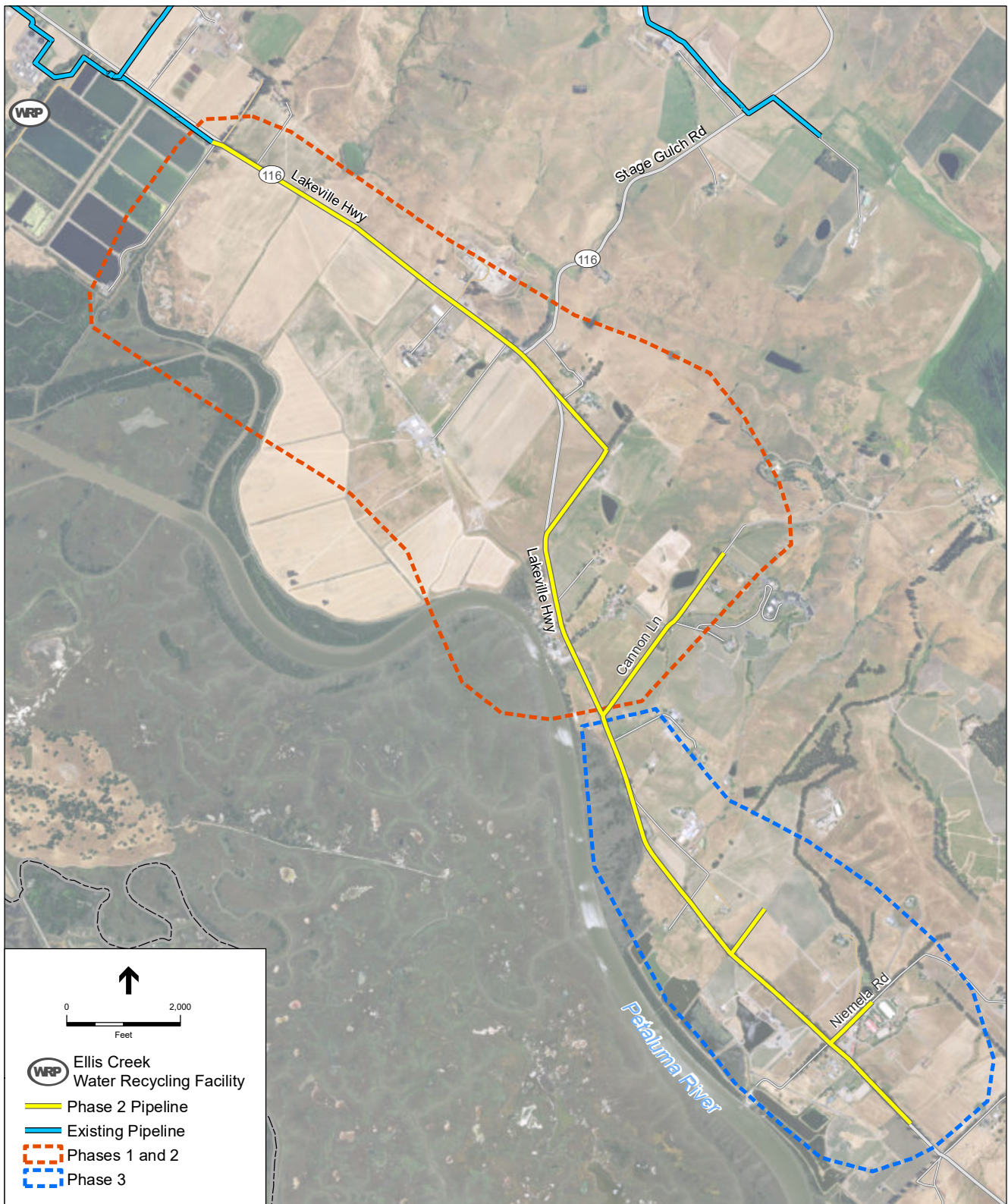
A 2016 comprehensive Recycled Water Master Plan developed for the City of American Canyon identified several pipeline extensions of the existing system to deliver recycled water to existing landscaping and industrial users on potable water and convert them to recycled water for non-potable uses. The customer demands associated with these extensions would be met directly from the WRF during the peak month. No seasonal storage would be needed. Phase 1 expansion includes six recycled water pipeline extensions, totaling 2.5 miles, located within existing public roadways in the northern and western portions of the city (**Figure 8**), yielding 102 AFY of tertiary-treated recycled water.



North Bay Water Reuse Program Phase 2 EIS/EIR . 206088
Notice of Preparation

Figure 6
City of Petaluma
Urban Recycled Water Expansion

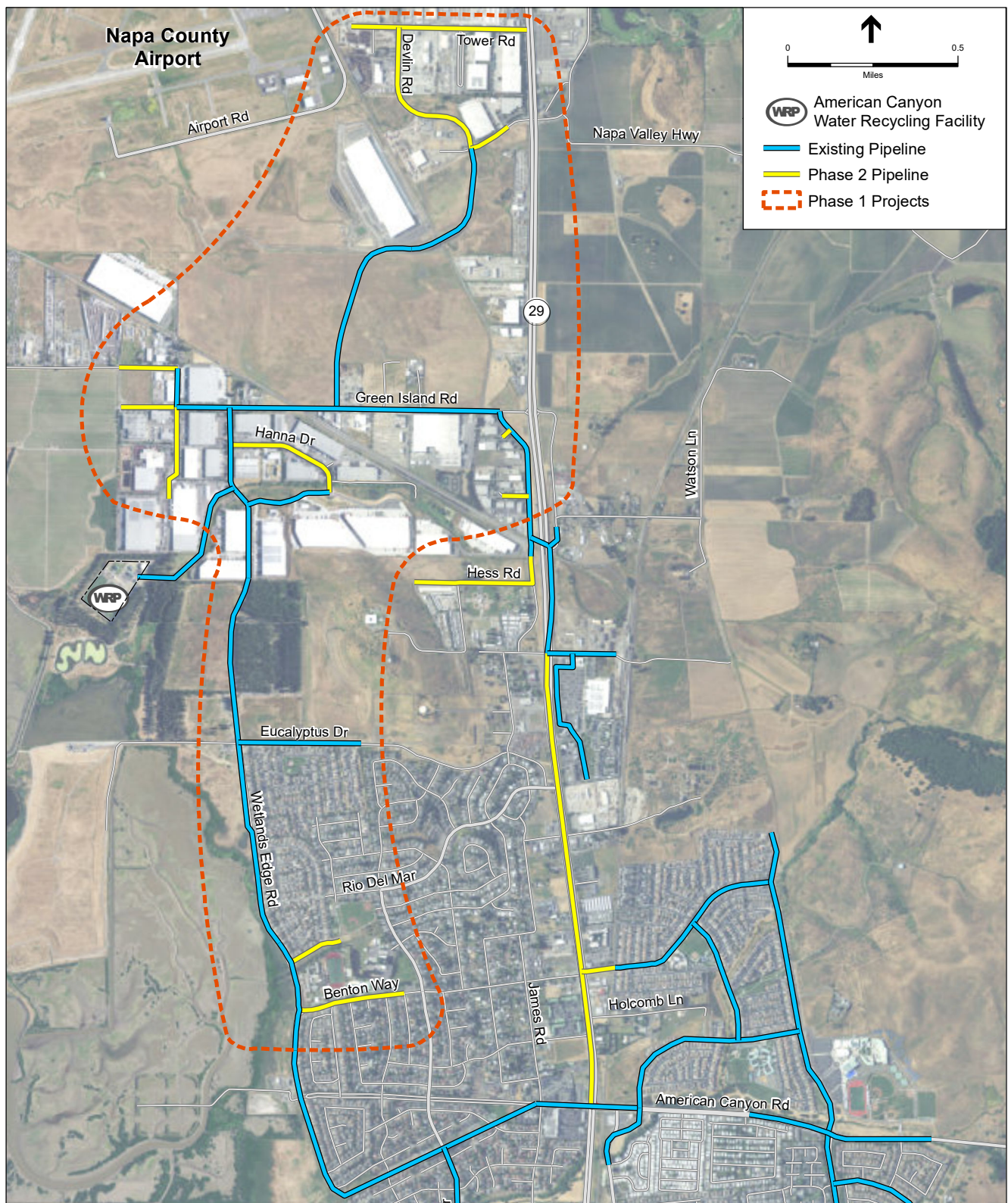
SOURCE: North Bay Water Reuse Authority



SOURCE: North Bay Water Reuse Authority

North Bay Water Reuse Program Phase 2 EIS/EIR . 206088
Notice of Preparation

Figure 7
City of Petaluma
Agricultural Recycled Water Expansion
Phases 1, 2, and 3



SOURCE: North Bay Water Reuse Authority

North Bay Water Reuse Program Phase 2 EIS/EIR . 206088
Notice of Preparation

Figure 8
City of American Canyon
Phase 1 Recycled Water Distribution System Expansion

Phase 2 Recycled Water Distribution System Expansion

Like Phase 1, this project includes additional pipeline extensions from the existing recycled water system, as identified in the City of American Canyon's 2016 Recycled Water Master Plan. Phase 2 would deliver a yield of 25 AFY recycled water to and convert existing landscaping and industrial users from potable water to recycled water for non-potable uses. The customer demands associated with these extensions would be met directly from the WRF during the peak month. No seasonal storage would be needed. These pipelines would be implemented after the Phase 2 Treatment Plant Upgrades described below are completed. The Phase 2 expansion project includes three recycled water pipeline extensions, totaling 2.0 miles, located within existing built roadways (**Figure 9**).

American Canyon WRF Phase 2 Treatment Plant Upgrades

This project would include facility upgrades at the existing American Canyon WRF to increase tertiary treatment process to improve water quality for existing and future recycled water users. The existing American Canyon WRF consists of a membrane bioreactor (MBR) that could produce 3.75 mgd of tertiary recycled water for non-potable reuse in the City's service area. This project would construct a two-stage reverse osmosis (RO) system, modify existing ponds for concentrate disposal, and install new pipelines to connect the existing MBR system to the RO system and from the RO system to the modified ponds for concentrate disposal, all within the developed area of the WRF. The proposed upgrades would greatly benefit existing and new recycled water customers by reducing the concentration of total dissolved solids (TDS) in the effluent and providing the necessary facilities for concentrate disposal through modified evaporation ponds.

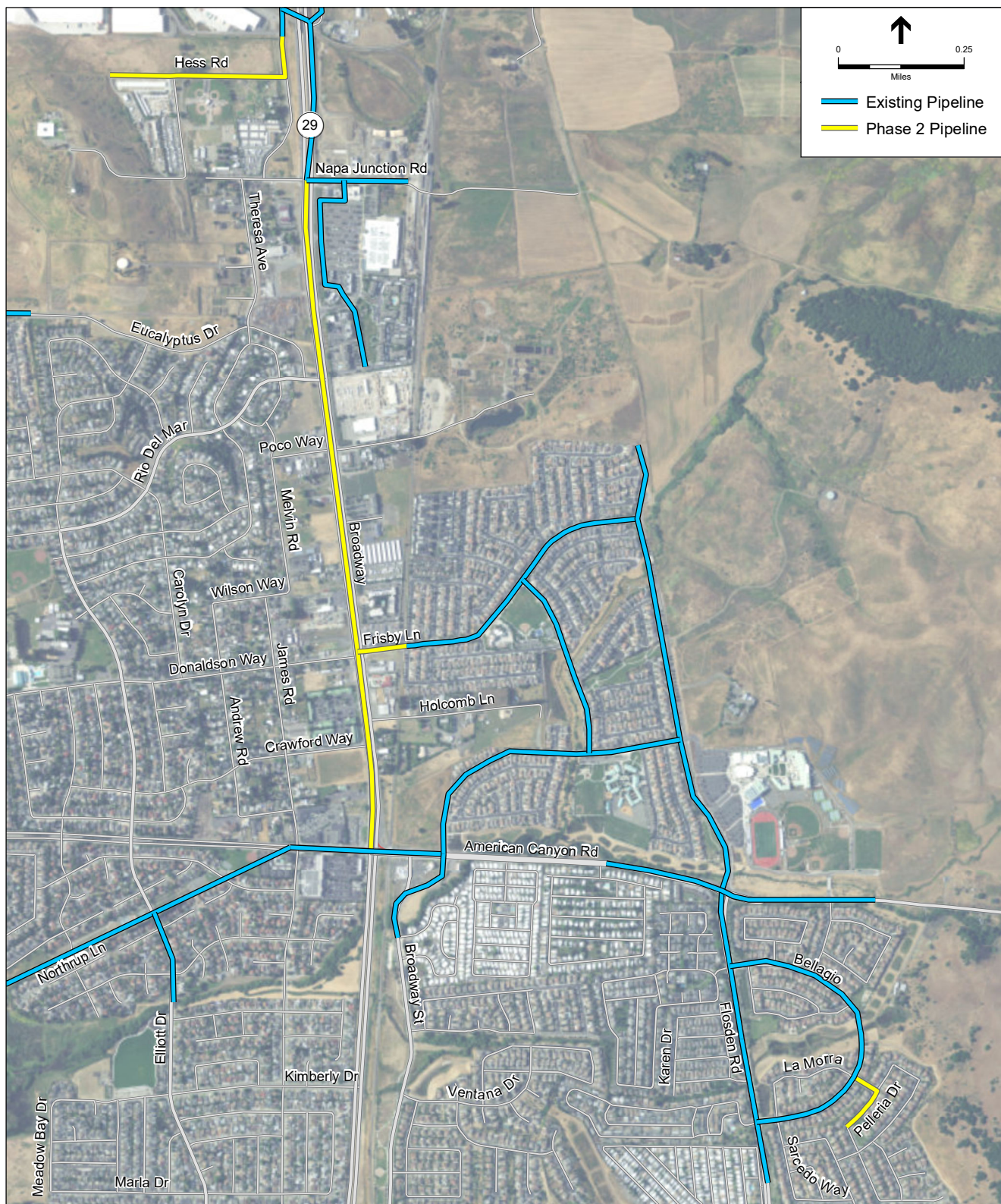
Programmatic Level

The programmatic level evaluation will include six projects, listed below in **Table 2** and shown on **Figure 10**. These projects are not proposed for implementation under the Phase 2 Program, but are included in the EIR/EIS at a programmatic level. While active projects for the respective member agency, they are currently at a conceptual level and would be implemented as additional design and funding become available. These projects will be examined at a program level to allow for future funding opportunities.

TABLE 2
PHASE 2 PROGRAMMATIC PROJECTS

Agency	Project Type	Project Name
Novato SD	Seasonal Storage	Option 1: Site Near Highway 37 (Tertiary) 150 AF
	Environmental Enhancement	Marin County Lower Novato Creek Project - Restoration
City of Petaluma	Distribution	Agricultural Recycled Water Expansion Phase 3
Napa SD	Operational Storage	Napa State Hospital Storage Tank
Water Agency	Potable Water ASR	Valley of the Moon ASR
	Potable Water ASR	Sonoma ASR

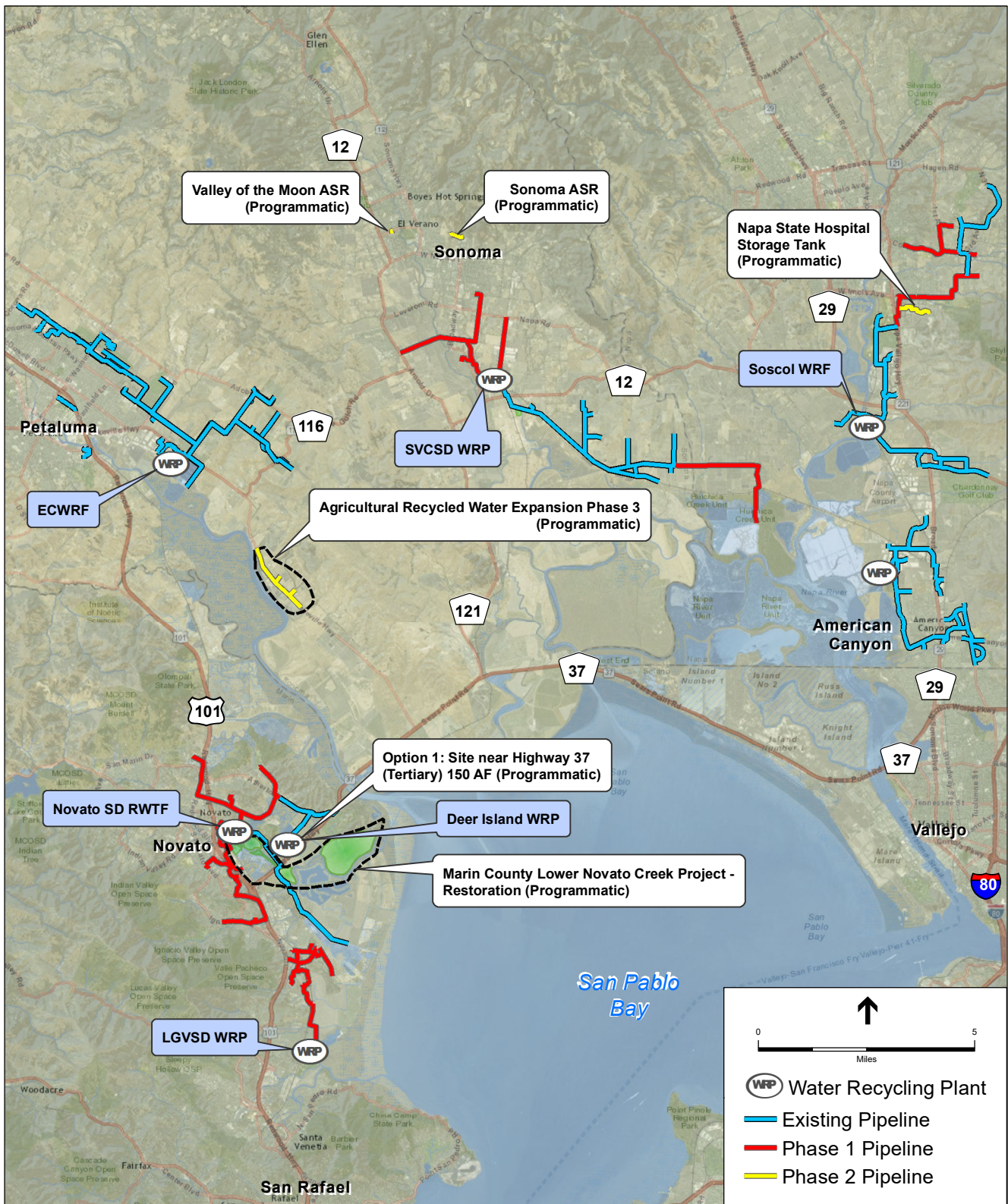
NOTES: ASR = Aquifer Storage and Recovery



SOURCE: North Bay Water Reuse Authority

North Bay Water Reuse Program Phase 2 EIS/EIR . 206088
Notice of Preparation

Figure 9
City of American Canyon
Phase 2 Recycled Water Distribution System Expansion



SOURCE: North Bay Water Reuse Authority

North Bay Water Reuse Program Phase 2 EIS/EIR . 206088
 Notice of Preparation
Figure 10
 NBWRP Programmatic Level Projects

Issues to Be Addressed in the EIR

The EIR/EIS will address the potential environmental impacts associated with the proposed Project. Specific areas of analysis will include: Aesthetics, Agriculture Resources, Air Quality, Biological Resources, Cultural Resources, Geology and Soils, Hazards and Hazardous Materials, Hydrology and Water Quality, Land Use and Planning, Noise, Population and Housing, Public Services, Recreation, Transportation and Traffic, Tribal Cultural Resources, Utilities and Public Services, Socioeconomics, and Environmental Justice. Areas of analysis may be changed based on input received during the NOP review period. Where feasible, mitigation measures will be proposed to avoid or reduce such impacts. As required by CEQA and NEPA, the environmental analysis will consider the projects proposed under the Phase 2 Program, as well as a number of feasible alternatives – including the No Action Alternative. Additionally, potential cumulative impacts of the Project will be addressed in the EIR/EIS.

Information to be included in the EIR/EIS will also be based on input and comments received during this NOP review period. Decision-makers, responsible and trustee agencies under CEQA, property owners, and interested persons and parties will also have an opportunity to comment on the Draft EIR/EIS after it is published and circulated for public review.

Public Comment Period for this Notice of Preparation

Due to the time limits mandated by State law, your response must be sent at the earliest possible date, but not later than 30 days after receipt of this notice. The public comment period will close at **5:00 p.m. on August 21, 2017**. Please include a name, address, email address, and telephone number of a contact person in your agency for all future correspondence on this subject. Please send your comments to:

Sonoma County Water Agency

Anne Crealock
404 Aviation Blvd.
Santa Rosa, CA 95403

You may also submit your comments electronically at the following website:

www.nbwra.org

Or via e-mail to:

Phase2EIR@nbwra.org

Before including your name, address, phone number, e-mail address, or other personal identifying information in your comment, you should be aware that your entire comment – including your personal identifying information – may be made publicly available at any time.

**North Bay Water Reuse Authority • c/o Sonoma County Water Agency • 404 Aviation Boulevard, Santa Rosa, CA
95403 707-235-8965 • NBWRA.org**

County of Marin • Las Gallinas Valley Sanitary District • Novato Sanitary District • Marin Municipal Water District • North Marin Water District • Sonoma County Water Agency
City of Petaluma • Sonoma Valley County Sanitation District • County of Napa • Napa Sanitation District • City of American Canyon

Scoping Meetings

In order for the public and regulatory agencies to have an opportunity to ask questions and submit comments on the scope of the EIR/EIS, a series of scoping meetings will be held within Marin, Sonoma, and Napa counties during the NOP review period. The scoping meetings will be held on the following dates:

August 2, 2017 (Wednesday)
6:30 PM – 8:00 PM
San Rafael Community Center Auditorium
618 B Street, San Rafael

August 3, 2017 (Thursday)
6:30 PM – 8:00 PM
American Canyon City Hall (Council Chambers)
4381 Broadway, Suite 201, American Canyon

August 9, 2017 (Wednesday)
6:30 PM – 8:00 PM
Petaluma Community Center, Meeting Room A-D
320 North McDowell Boulevard, Petaluma

August 10, 2017 (Thursday)
6:30 PM – 8:00 PM
Sonoma Community Center, Room 110
276 East Napa Street, Sonoma

If you have a disability which requires an accommodation, an alternative format, or requires another person to assist you while attending these meetings or reviewing associated materials, please contact the Sonoma County Water Agency at 707-524-8378, as soon as possible to ensure arrangements for accommodation.

Documents or files related to the proposed project are available for review at www.nbwra.org and the member agency offices; they can be also made available by emailing Phase2EIR@nbwra.org. If you have any questions, or if you wish to update your information on our mailing list, please call Ms. Anne Crealock of the Water Agency at (707) 547-1948.

**North Bay Water Reuse Authority • c/o Sonoma County Water Agency • 404 Aviation Boulevard, Santa Rosa, CA
95403 707-235-8965 • NBWRA.org**

County of Marin • Las Gallinas Valley Sanitary District • Novato Sanitary District • Marin Municipal Water District • North Marin Water District • Sonoma County Water Agency
City of Petaluma • Sonoma Valley County Sanitation District • County of Napa • Napa Sanitation District • City of American Canyon